



WE ARE GMS

AND THIS IS WHAT WE DO...



LARGE ENOUGH TO COMPETE, SMALL ENOUGH TO CARE

**SPECIALISTS IN LARGE FORMAT PRINT.
IF YOU CAN IMAGINE IT, WE CAN PRINT IT!**

GMS is a large format digital print and design company based in Victoria, Cornwall. We supply a wide range of signage, exhibition stands and display products for various industries and even offer fine art and giclée printing.

With the latest cutting edge printing and finishing technology, we are able to produce superior quality products and print direct to a myriad of substrates. We offer specialist finishes in-house and the UV inks in our printing process are cured almost instantly, making them waterproof, colourfast and vibrant; so you can get your graphics looking their best and where they need to be, on time, every time.

We pride ourselves on the quality of our work, our fast turnaround times and excellent customer service. Our experience as a team, combined with the latest print technology, make us hard to beat on value for money.

We have worked on a huge variety of bespoke projects over the years and are always looking for new and exciting ideas to challenge our skills and expertise.

But don't just take our word for it – get in touch with us about your next project and see for yourself.

GENERAL SIGNAGE

SIGNAGE SOLUTIONS FOR EVERY SITUATION



Print for every industry:

- ▶ Visitor Attractions
- ▶ Construction
- ▶ Health & Safety
- ▶ Hotel & Tourism
- ▶ Traffic Signs
- ▶ Pubs & Restaurants
- ▶ Holiday Parks & Resorts
- ▶ Retail
- ▶ Schools & Colleges
- ▶ Public Services
- ▶ Museums & Exhibitions
- ▶ Estates & Gardens
- ▶ Wayfinder Signage
- ▶ Illuminated Signs
- ▶ Fascias
- ▶ Wall Graphics
- ▶ Window & Floor Graphics



Our state-of-the-art equipment provides exceptional quality print and finishing. By utilising flatbed UV, roll fed UV, latex and pigmented ink printing systems, alongside our Zünd digital finishing equipment, you can rest assured that we can produce a product of the highest quality, accurately, quickly and cost effectively.

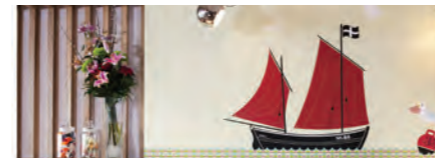


Printed on behalf of The Logical Choice and shortlisted for a Print Week award

WALL COVERINGS & INTERIORS

PERFECT FOR ANY INTERIOR WHERE YOU WANT TO CREATE AN INSPIRING SPACE WITH PHOTOGRAPHY OR GRAPHICS

Instantly transform a space with a customised wall covering – whether it's a commercial, retail or home environment, we custom print to fit your requirements.



CONSTRUCTION SIGNAGE & SITE HOARDINGS

SIGNAGE AND HOARDINGS ARE AN IMPORTANT FEATURE OF ANY BUILDING SITE – THEY OFFER SECURITY, PRIVACY AND IMPROVE APPEARANCE

Our hoardings are digitally printed with UV-cured inks; ensuring long-lasting colour stability even in direct sunlight and poor weather conditions. The graphics are finished in a range of anti-graffiti laminates depending on the longevity of your project.



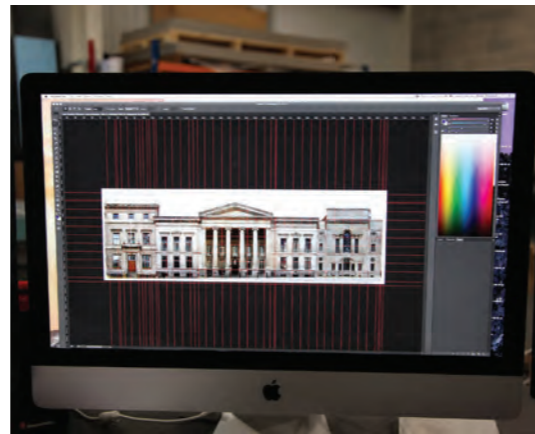
We also offer a full range of construction site signage and interior manifestations:

- ▶ Scaffold banners
- ▶ Heras fence covers
- ▶ Dibond hoarding
- ▶ Safety signage
- ▶ Vinyl and mesh banners
- ▶ Window graphics
- ▶ Bespoke wallpapers



BUILDING WRAPS

MAKE AN IMPRESSIVE IMPACT WITH YOUR BRANDING



Buildings never look their best during renovation or covered with scaffolding; wrapping a building with large full colour printed mesh banners can make a dramatic improvement, keeping the development work out of sight.

Any building can be transformed by a building wrap that will project an image that promotes the development under construction or advertises products and services.



Banners the size of a building need careful construction to ensure the message is delivered both safely and effectively. We use a mesh pvc material designed for strength and durability and, with a perforated surface, the wind-loading on the banner is dramatically reduced. Welded joints, reinforced stitched hems with metal eyelets make a suitably robust construction. The image printed on the banner, in fade resistant UV cured ink, is of excellent quality and will last for years.



WINDOW GRAPHICS

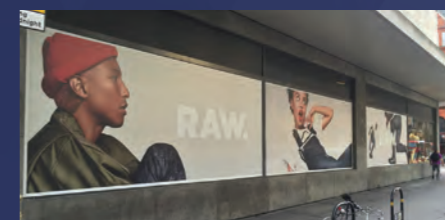
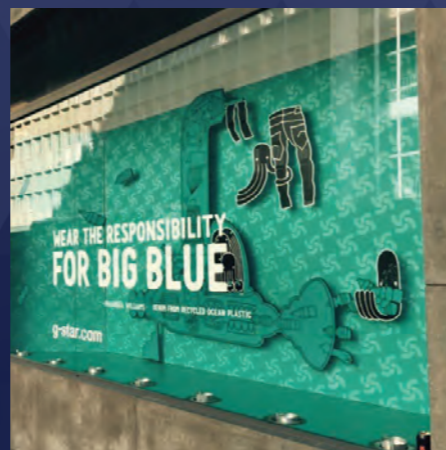
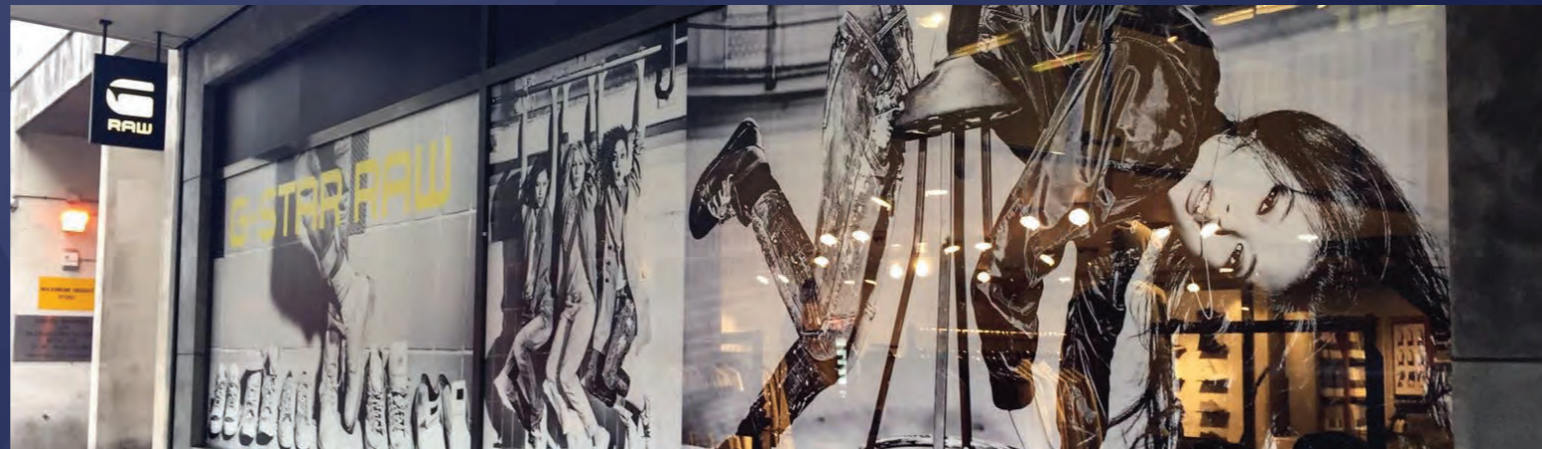
TRANSFORM YOUR WINDOWS INTO A HARDWORKING MEDIUM FOR YOUR BUSINESS

Used carefully, window graphics can achieve mood enhancing decorative effects, offer privacy and impart information all at once. We can supply permanent self adhesive products or easily installed and removable static cling options.

Let us help you choose the right material for your window graphics – from frosted effects to cut vinyl, blockout or one way vision, as well as solar films and glass colour tints.

“GREAT PRODUCT, GREAT TEAM. I WOULD HAVE NO HESITATION IN RECOMMENDING GMS.”

TOM PATERAKIS
PROJECT MANAGER, G-STAR RAW



RETAIL & POINT OF SALE

USE CUSTOM GRAPHICS, SMART SIGNAGE AND BOLD BRANDING TO STAND OUT TO YOUR CUSTOMERS

We offer complete signage solutions for the retail industry – from full shop refits to bespoke point of sale displays, stunning and engaging large format graphics can give you the edge over your competitors and encourage customers to make a purchase.



We offer:

- ▶ Bespoke shop signs
- ▶ Exterior hanging signs
- ▶ Backlit signage and displays
- ▶ Sign trays
- ▶ Chalkboards
- ▶ Pavement signs
- ▶ Plaques
- ▶ Cardboard displays and product holders
- ▶ Rigid boards
- ▶ Non-slip floor stickers
- ▶ Directory signs
- ▶ Counter and till wraps
- ▶ Internal and external window and wall graphics
- ▶ Branded packaging
- ▶ Freestanding signage

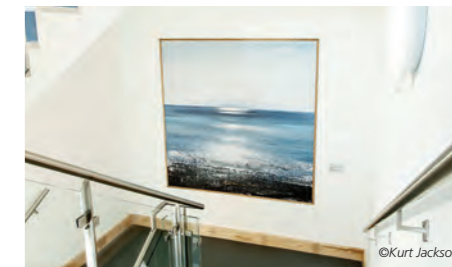
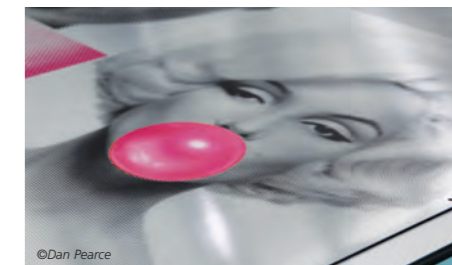
FINE ART PRINT

COMPLIMENT YOUR ART AND PHOTOGRAPHY WITH THE RIGHT FINISH

We help artists, photographers and creatives reproduce their work to gallery standards. We don't just print to paper – we can print direct to almost any surface. We use Giclée printing to produce the finest detail and can even recreate realistic impasto effects.

We print direct to:

- ▶ Luxury papers & card
- ▶ Canvas
- ▶ Dibond
- ▶ Acrylic
- ▶ Brushed aluminium
- ▶ Wood



Bespoke specifications and custom sizes are available on a wide range of papers and substrates without any minimum order. We can also advise on easy and effective mounting of your artwork.



VEHICLE GRAPHICS

A MOBILE ADVERTISEMENT THAT WILL BE SEEN BY THOUSANDS OF PEOPLE EVERY DAY



From full and partial vehicle wraps to magnetic signage and custom cut decals, by using the best quality materials, we can apply branding to virtually any vehicle. Whether you have a single vehicle or an entire fleet, we can offer high quality and best value solutions to suit any budget.

PRINTED BANNERS

AN EYE-CATCHING, COST-EFFECTIVE WAY TO ADVERTISE YOUR BUSINESS OR EVENT



From portable roll banners to PVC vinyl and everything in between – we have an option to fit your space and requirements, and because we have all of the finishing equipment in-house, we can offer a quick turnaround.

Banners for every occasion:

- ▶ Premium vinyl banners
- ▶ Wind proof mesh banners
- ▶ Heras fence banners
- ▶ Scaffold banners
- ▶ Feather flags
- ▶ Portable roll banners
- ▶ Back wall and POP displays
- ▶ Fabric banners
- ▶ Media backdrops
- ▶ Framed and pole banners

POP-UP EXHIBITION STANDS

PORTABLE AND EASY TO SET UP WITH MAXIMUM BACKDROP COVERAGE AND INSTANT BRANDING

Our magnetic pop-up displays offer high quality, adaptable presentations that are incredibly easy to erect and provide instant impact.

A top branded product with a lifetime warranty on hardware, the stands stow neatly into the wheeled transit case for safe storage and easy transportation.



Stands are available in either a straight or curved design and in a variety of sizes which can be combined to make larger or different shaped displays.

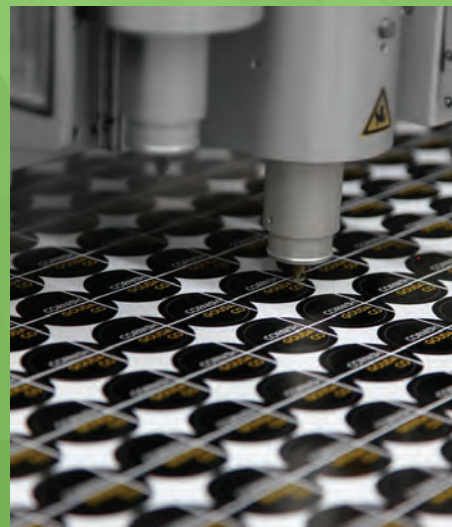


We also print replacement panels when you are ready to refresh your designs.

STICKERS & FLOOR GRAPHICS

STICKERS AND DECALS ARE USEFUL FOR ANY BUSINESS FOR QUICK AND EASY BRANDING

High quality, fully customised sticker and decal printing on paper or vinyl – choose any size and finish and cut to shape.



“ GREAT COMPANY WITH SUPERB COMMUNICATION! WE WOULDN'T HESITATE TO USE THEM AGAIN. ”

HANNAH CLEAVE

FREESTANDING DISPLAYS, PEEP-THRU BOARDS & SELFIE FRAMES

A FUN PHOTO OPPORTUNITY AND AN ENGAGING WAY TO PROMOTE YOUR BUSINESS OR CHARITY

If you're looking for something eye catching and interactive for your premises or event, use a branded photo board to encourage customers to take a photo and tag your social media channels.



Printed on lightweight but sturdy Smart-X foam board, the displays are freestanding and come flat pack with two Velcro application side supports.



Our frames are bespoke and can be produced to your exact specifications. We also have a design team who can create the artwork for you and bring your ideas to life.



View the GMS Smart Frame display system brochure

SMART FRAME DISPLAY SYSTEM

CONVERT TO THE SYSTEM OF FABRIC STRETCHED ON FRAMES

GMS is one of the leading suppliers of Smart Frame displays. Smart Frame is a system based on light aluminium frames with prints on flexible fabric, to create a stunningly aesthetic and timeless way of displaying your graphics.

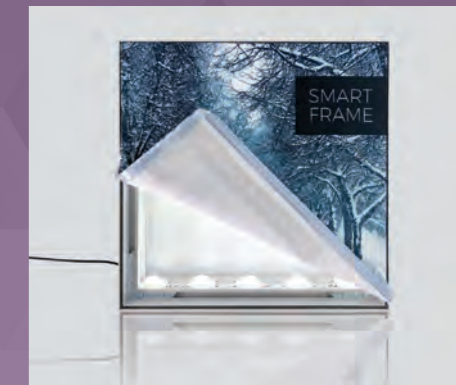
The innovation of the Smart Frame allows for simple assembly and the ability to change the print out at any time. The fabrics are dye-sublimation printed, making them vibrant, hard wearing and fade-resistant in sunlight. The edges of the fabric are finished with a silicone elastic band, which is clipped into the frame profile, for perfectly tight and exposed graphics.



WALL MOUNTED FRAMES



FREESTANDING



LED BACKLIT OPTIONS



HANGING INSTALLATIONS



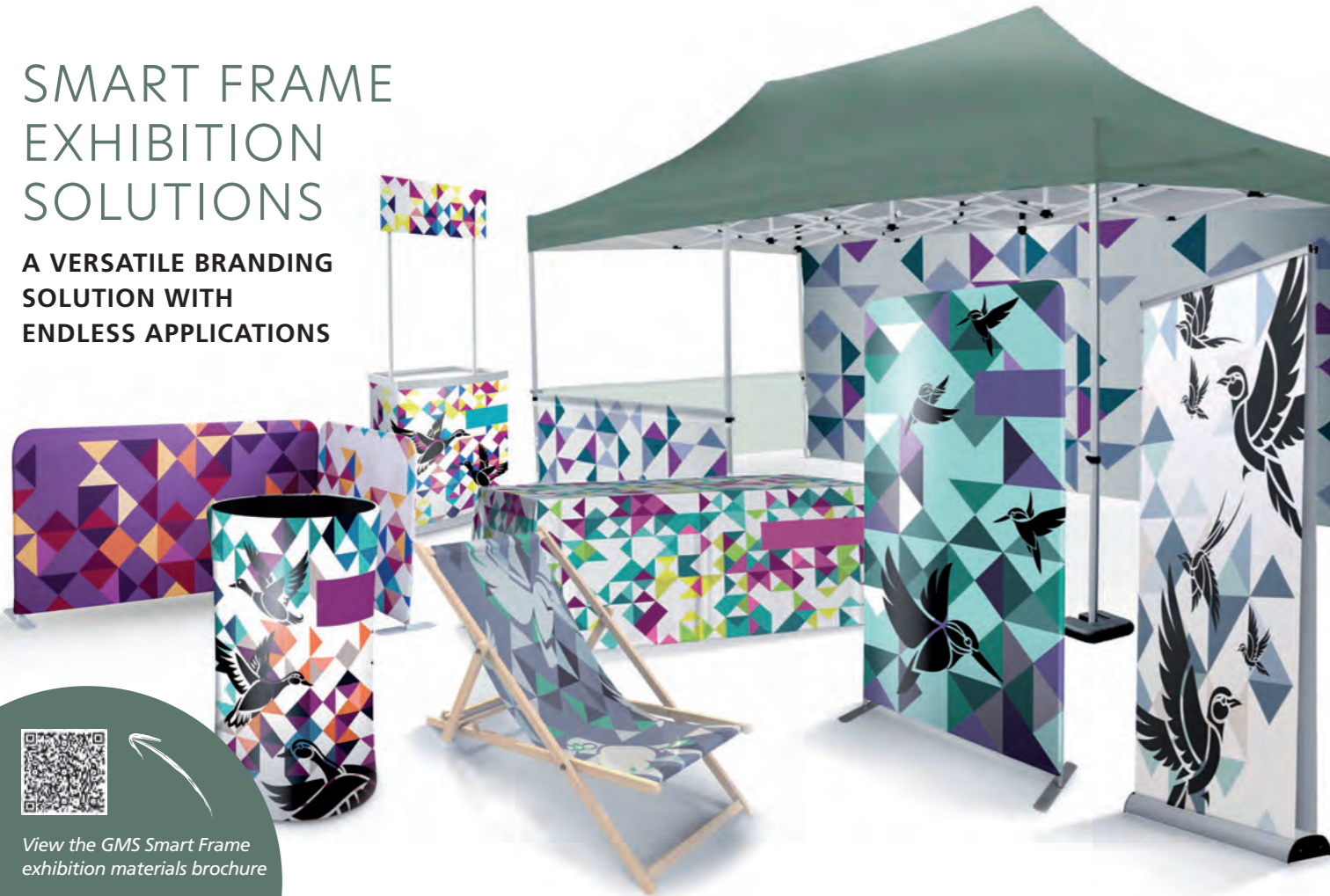
BOX DESIGNS

Whether you want to decorate the office, add eye-catching graphics to your retail outlet, provide branded exhibition displays or even just decorate and update your home, Smart Frame solutions are easy to install and suitable for any application.

Available in a range of options, including wall mounted frames, LED lighting, single or double sided freestanding displays, boxes and hanging installations.

SMART FRAME EXHIBITION SOLUTIONS

A VERSATILE BRANDING
SOLUTION WITH
ENDLESS APPLICATIONS



View the GMS Smart Frame
exhibition materials brochure



WALLS AND STANDS



FLAGS



TRADE FAIR COUNTERS



TENTS



CHAIRS, TABLECLOTHS & EXTRAS

From backdrops to exhibition stands, trade fair counters to event flags and even pop up tents and deck chairs – our fabric displays offer high quality presentations that are space saving, incredibly easy to erect and provide instant impact.

All graphics are printed using the dye-sublimation technique, which guarantees vivid colours and resistance to weathering.

GMS-STANDARD TECHNOLOGY & SERVICE

TO ENSURE WE ARE AT THE FOREFRONT OF QUALITY PRINT, WE ARE CONSTANTLY UPGRADING OUR TECHNOLOGY TO SOME OF THE MOST STATE-OF-THE-ART EQUIPMENT WITHIN THE INDUSTRY

We refuse to compromise on quality – from the materials we print, to the inks we use, the technology involved in production, right through to our customer service. Alongside our wealth of knowledge and experience, we have carefully invested in some of the finest printing and finishing equipment.



Specialist in-house features:

- ▶ Fluorescent neon inks
- ▶ White and red inks
- ▶ UV cured matt, satin and gloss varnishes
- ▶ Media diversity – acrylic, aluminium composite, wood, banners, polyester, polycarbonate, polystyrene, PVC, flexible foam panels, glass and metal
- ▶ Ability to print to heat sensitive materials (such as textiles, films and paperboard)
- ▶ In-house lamination
- ▶ Precision cutting equipment
- ▶ Welding and banner finishing

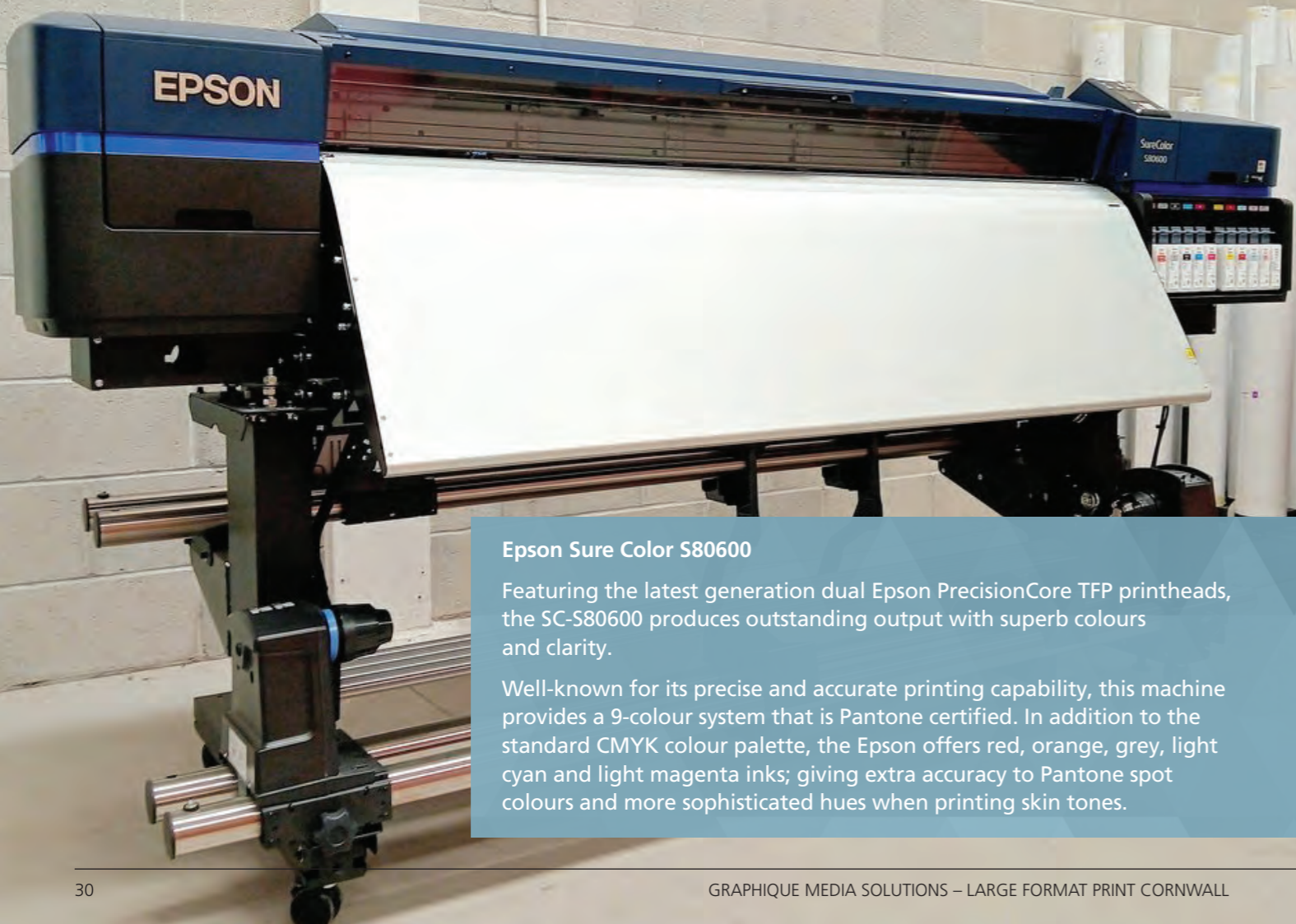


SwissQPrint Nyala 4

Our Nyala 4 flat bed printer can print up to 3200mm wide and has a roll option for any length.

Our ink configuration is a 4-colour process with the addition of varnish, white ink and four UV fluorescent neon spot colours that activate under black light. The varnishing enhancements can be used in a range of applications, including matt, satin and gloss – spot or flood coating.

As one of Europe's best selling printers in its class, the precision and consistency in print quality of the Nyala 4 is second to none. A print resolution of up to 1080dpi makes us the go-to printers for fine art prints and our LED cold curing lights enable us to print to heat sensitive materials without risk, allowing us to offer greater diversity in choice of materials.



Epson Sure Color S80600

Featuring the latest generation dual Epson PrecisionCore TFP printheads, the SC-S80600 produces outstanding output with superb colours and clarity.

Well-known for its precise and accurate printing capability, this machine provides a 9-colour system that is Pantone certified. In addition to the standard CMYK colour palette, the Epson offers red, orange, grey, light cyan and light magenta inks; giving extra accuracy to Pantone spot colours and more sophisticated hues when printing skin tones.

Zünd G3 Digital Flatbed Cutter

The Zünd G3 offers intelligent, efficient and reliable digital cutting. Its innovative technology makes it hard to beat for precision and can be applied to a wide range of materials – from paper and card to wood, vinyl, plastics and even textiles.

Our Zünd has a processing bed of 3200mm x 1800mm and the full range of cutting tools.



We are constantly upgrading our services and equipment – follow us on social media to keep up to date

f @ X in



SITE SURVEYS & INSTALLATIONS

TO ENSURE WE UNDERSTAND THE COMPLEXITIES OF YOUR PROJECT AND FORESEE ANY POTENTIAL ISSUES, WE OFFER A COMPREHENSIVE ONSITE SURVEY.

With any large format project, accurate measurements are imperative to achieving a high quality finish, so one of our team will visit the site to take measurements and photographs and highlight any key areas of complexity or concern – giving you peace of mind for accurate artworking.



When it's time to bring your vision to life, we have a highly experienced installations team who will ensure it's put up seamlessly. The team have the necessary IPAF accreditations and are CSCS cardholders for onsite working.

Our installations team hold the following accreditations:



BRAND SUPPORT & CREATIVE ARTWORKING

OUR SERVICES DON'T JUST STOP AT PRINT – WE HAVE AN IN-HOUSE DESIGN TEAM OFFERING A FULL GRAPHICS AND MARKETING EXPERIENCE, ENABLING US TO HANDLE YOUR PROJECT FROM CONCEPT RIGHT THROUGH TO COMPLETION



From creating eye-catching designs to storytelling and brand identity – the designers at GMS are well experienced in their field.

“ GMS ALWAYS COME UP WITH THE GOODS. ALWAYS ON TIME AND ALWAYS TOP QUALITY. ”

BRUCE MORGAN

READY TO TALK ABOUT YOUR NEXT IDEA?

IF YOU'D LIKE TO FIND OUT MORE ABOUT HOW WE WORK, OUR PRICING AND HOW WE CAN HELP YOUR BUSINESS, PLEASE GET IN TOUCH – WE'D LOVE TO BE PART OF YOUR NEXT SUCCESSFUL PROJECT



01726 893129 / robin@gms.uk.com / [f](#) [@](#) [X](#) [in](#)

“WITHOUT DOUBT THE GO TO SPECIALIST PRINTERS FOR ME. ROBIN HAS A WEALTH OF KNOWLEDGE AND THE EQUIPMENT TO BACK IT UP. HE'S ALWAYS HAPPY TO HELP AND SUGGEST OPTIONS TO ENSURE ALL WORK IS OF THE HIGHEST QUALITY.”

CHRIS HEWITT
CHRIS HEWITT PHOTOGRAPHY



GMS*

GRAPHIQUE MEDIASOLUTIONS

📍 Units 8–9 Victoria Trading Estate, Roche, Cornwall PL26 8LX

☎ 01726 893129 | ✉ robin@gms.uk.com | [f](#) [@](#) [X](#) [in](#) | 🌐 gms.uk.com

